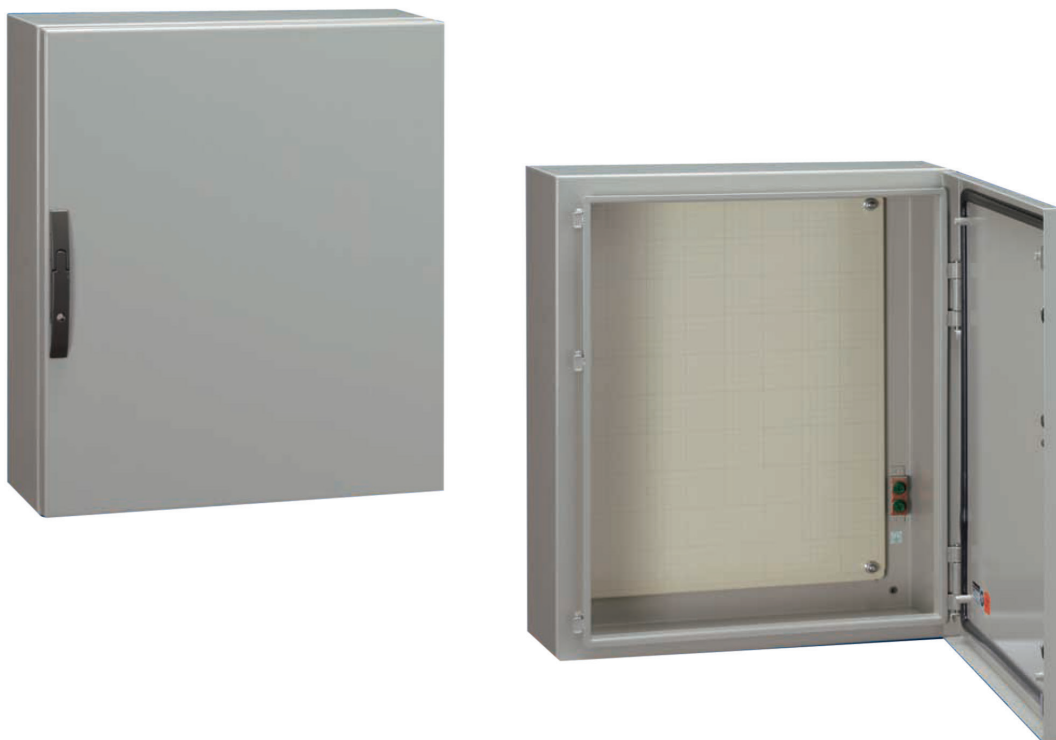


箱体规格/Cabinet Specifications

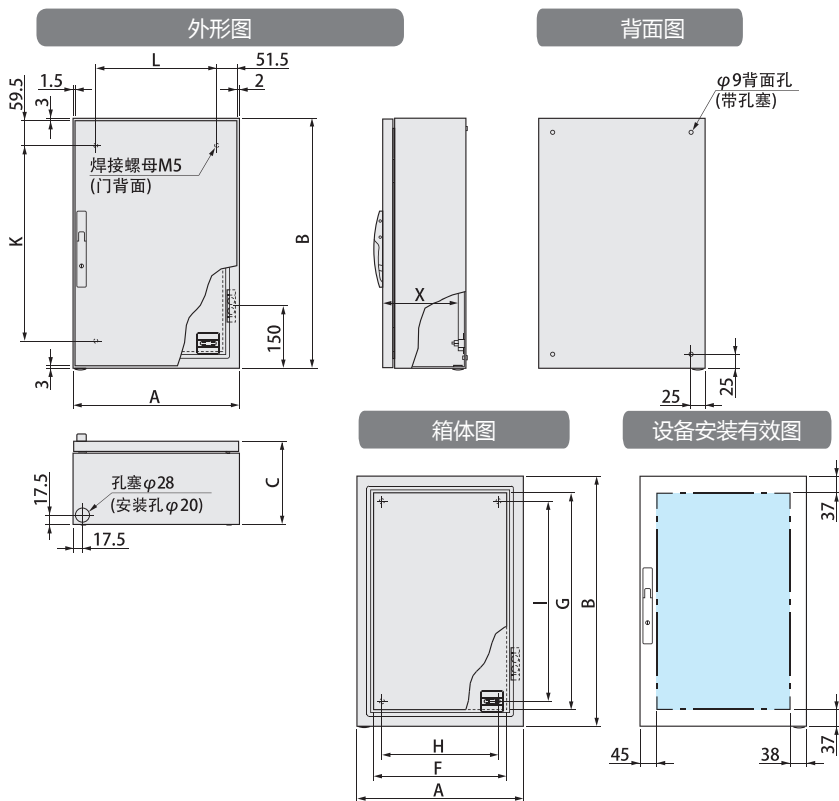


箱体
Box

规格

浅驼色 孟赛尔 5Y7/1
日涂工 E25-70B

板厚	门板 2.3mm,箱体 1.6mm
安装板	镀锌钢板 2.3mm
门锁样式	IP拉手
颜色	5Y7/1
防护等级	IP66



进深 160mm

单位/mm

交货期的区分	型号	外形尺寸			铁制基板尺寸				门焊接螺母		有效进深 X	产品重量 (kg)	价格 (单位:元)
		A(宽度)	B(高度)	C(进深)	F(宽度)	G(高度)	H	I	K	L			
△	RUL16-34	300	400	160	220	320	180	280	275	190	134	9.7	1,215
△	RUL16-43	400	300	"	320	220	280	180	175	290	"	9.6	1,211
△	RUL16-44	"	400	"	"	320	"	280	275	"	"	12.2	1,272
△	RUL16-45	"	500	"	"	420	"	380	375	"	"	14.7	1,456

进深 200mm

交货期的区分	型号	外形尺寸			铁制基板尺寸				门焊接螺母		有效进深 X	产品重量 (kg)	价格 (单位:元)
		A(宽度)	B(高度)	C(进深)	F(宽度)	G(高度)	H	I	K	L			
△	RUL20-34	300	400	200	220	320	180	280	275	190	174	10.5	1,254
△	RUL20-43	400	300	"	320	220	280	180	175	290	"	10.4	1,241
△	RUL20-44	"	400	"	"	320	"	280	275	"	"	13.0	1,315
△	RUL20-45	"	500	"	"	420	"	380	375	"	"	15.6	1,504
△	RUL20-46	"	600	"	"	520	"	480	475	"	"	19.0	1,548
△	RUL20-55	500	500	"	420	420	380	380	375	390	"	18.6	1,611
△	RUL20-56	"	600	"	"	520	"	480	475	"	"	22.5	1,676
△	RUL20-64	600	400	"	520	320	480	280	275	490	"	18.0	1,496
△	RUL20-66	"	600	"	"	520	"	480	475	"	"	25.9	1,765
△	RUL20-68	"	800	"	"	720	"	680	675	"	"	33.3	2,048
△	RUL20-710	700	1,000	"	620	920	580	880	875	590	"	46.6	2,598
△	RUL20-88	800	800	"	720	720	680	680	675	690	181	42.2	2,415

进深 250mm

交货期的区分	型号	外形尺寸			铁制基板尺寸				门焊接螺母		有效进深 X	产品重量 (kg)	价格 (单位:元)
		A(宽度)	B(高度)	C(进深)	F(宽度)	G(高度)	H	I	K	L			
△	RUL25-45	400	500	250	320	420	280	380	375	290	224	16.8	1,574
△	RUL25-55	500	"	"	420	"	380	"	"	390	"	19.9	1,656
△	RUL25-56	"	600	"	"	520	"	480	475	"	"	23.9	1,741
△	RUL25-57	"	700	"	"	620	"	580	575	"	"	27.2	1,819
△	RUL25-66	600	600	"	520	520	480	480	475	490	"	27.4	1,852
△	RUL25-68	"	800	"	"	720	"	680	675	"	"	35.1	2,152
△	RUL25-610	"	1,000	"	"	920	"	880	875	"	225	43.2	2,489
△	RUL25-78	700	800	"	620	720	580	680	675	590	231	39.7	2,330
△	RUL25-710	"	1,000	"	"	920	"	880	875	"	225	48.8	2,770
△	RUL25-712	"	1,200	"	"	1,120	"	1,080	"	"	"	57.4	3,037

进深 300mm

交货期的区分	型号	外形尺寸			铁制基板尺寸				门焊接螺母		有效进深 X	产品重量 (kg)	价格 (单位:元)
		A(宽度)	B(高度)	C(进深)	F(宽度)	G(高度)	H	I	K	L			
△	RUL30-68	600	800	300	520	720	480	680	675	490	274	36.8	2,335
△	RUL30-710	700	1,000	"	620	920	580	880	875	590	"	50.9	2,954
△	RUL30-810	800	"	"	720	"	680	"	"	690	"	56.6	3,185
△	RUL30-812	"	1,200	"	"	1,120	"	1,080	"	"	"	66.5	3,483

进深 350mm

交货期的区分	型号	外形尺寸			铁制基板尺寸				门焊接螺母		有效进深 X	产品重量 (kg)	价格 (单位:元)
		A(宽度)	B(高度)	C(进深)	F(宽度)	G(高度)	H	I	K	L			
△	RUL35-45	400	500	350	320	420	280	380	375	290	324	19.1	1,994
△	RUL35-64	600	400	"	520	320	480	280	275	490	"	21.7	2,191
△	RUL35-66	"	600	"	"	520	"	480	475	"	"	30.4	2,637
△	RUL35-68	"	800	"	"	720	"	680	675	"	"	38.6	2,959